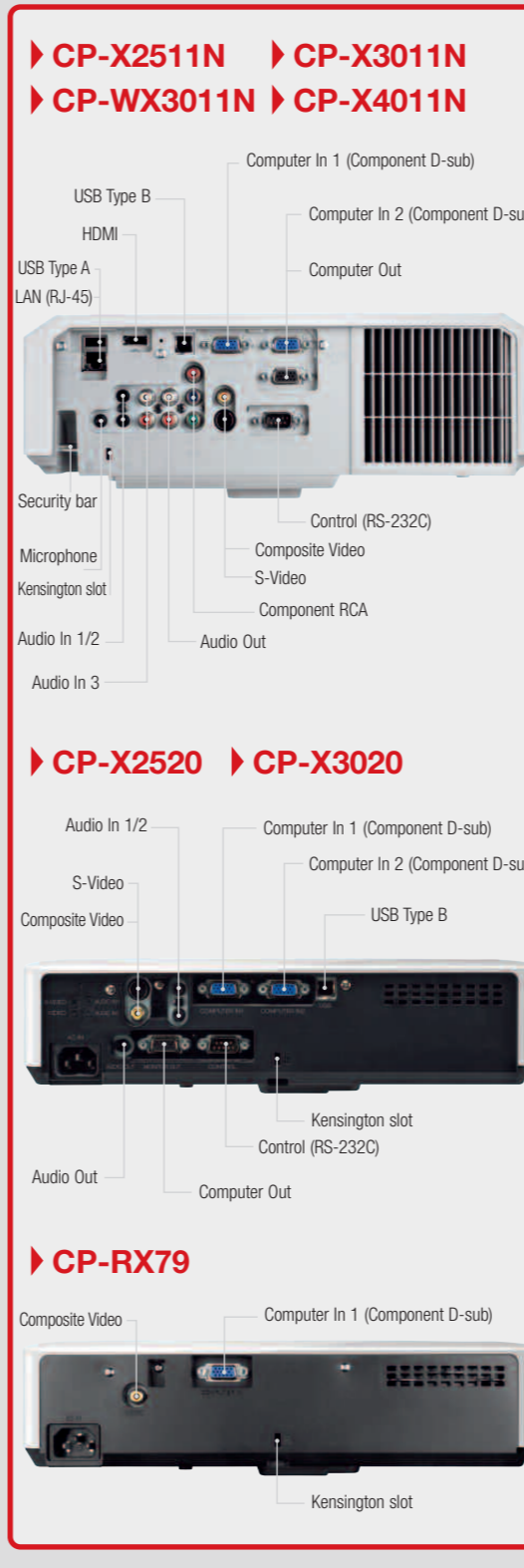


MULTI PURPOSE								
MODEL	CP-X2511N	CP-X3011N	CP-WX3011N	CP-X4011N	CP-RX79	CP-X2520	CP-X3020	
OPTICAL								
Resolution	XGA (1024 x 768)	XGA (1024 x 768)	WXGA (1280 x 800)	XGA (1024 x 768)	XGA (1024 x 768)	XGA (1024 x 768)	XGA (1024 x 768)	
Brightness	2700 ANSI Lumens (Normal Mode) 1800 ANSI Lumens (Eco Mode)	3200 ANSI Lumens (Normal Mode) 2100 ANSI Lumens (Eco Mode)	3000 ANSI Lumens (Normal Mode) 2000 ANSI Lumens (Eco Mode)	4000 ANSI Lumens (Normal Mode) 2700 ANSI Lumens (Eco Mode)	2200 ANSI Lumens (Normal Mode) 1900 ANSI Lumens (Eco Mode)	2700 ANSI Lumens (Normal Mode) 2200 ANSI Lumens (Eco Mode)	3200 ANSI Lumens (Normal Mode) 2200 ANSI Lumens (Eco Mode)	
Contrast ratio	2000:1	2000:1	2000:1	2000:1	500:1	500:1	500:1	
Lens	Manual focus, Manual zoom x 1.2	Manual focus, Manual zoom x 1.2	Manual focus, Manual zoom x 1.2	Manual focus, Manual zoom x 1.2	Manual focus, Manual zoom x 1.2	Manual focus, Manual zoom x 1.2	Manual focus, Manual zoom x 1.2	
Mirror	-	-	-	-	-	-	-	
Lamp life	3000 hours (Normal Mode)/6000 hours (Eco Mode)*	3000 hours (Normal Mode)/6000 hours (Eco Mode)*	3000 hours (Normal Mode)/6000 hours (Eco Mode)*	3000 hours (Normal Mode)/6000 hours (Eco Mode)*	3000 hours (Normal Mode)/4000 hours (Eco Mode)*	3000 hours (Normal Mode)/4000 hours (Eco Mode)*	3000 hours (Normal Mode)/4000 hours (Eco Mode)*	
Diagonal display size	30-300" (76-762cm)	30-300" (76-762cm)	30-300" (76-762cm)	30-300" (76-762cm)	30-300" (76-762cm)	30-300" (76-762cm)	30-300" (76-762cm)	
Keystone correction	Fixed, 9:1 upward shift	Fixed, 9:1 upward shift	Fixed, 9:1 upward shift	Fixed, 9:1 upward shift	Fixed, 6:1 upward shift	Fixed, 6:1 upward shift	Fixed, 6:1 upward shift	
Distance to width ratio	1.5 (Wide), 1.8 (Tele)	1.5 (Wide), 1.8 (Tele)	1.5 (Wide), 1.8 (Tele)	1.5 (Wide), 1.8 (Tele)	1.5 (Wide), 1.8 (Tele)	1.5 (Wide), 1.8 (Tele)	1.5 (Wide), 1.8 (Tele)	
COMPATIBILITY								
Computer compatibility	IBM Compatible VGA, SVGA, XGA, WXGA, SXGA, SXGA+, UXGA (compressed), MAC 16"	IBM Compatible VGA, SVGA, XGA, WXGA, SXGA, SXGA+, UXGA (compressed), MAC 16"	IBM Compatible VGA, SVGA, XGA, WXGA, SXGA, SXGA+, UXGA (compressed), MAC 16"	IBM Compatible VGA, SVGA, XGA, WXGA, SXGA, SXGA+, UXGA (compressed), MAC 16"	IBM Compatible VGA, SVGA, XGA, WXGA+, SXGA, SXGA+, UXGA (compressed), MAC 16"	IBM Compatible VGA, SVGA, XGA, SXGA, SXGA+, UXGA, WXGA+, MAC 16"	IBM Compatible VGA, SVGA, XGA, SXGA, SXGA+, UXGA, WXGA+, MAC 16"	
Composite/S-Video	NTSC/PAL/SECAM/PAL-M/PAL-N/NTSC4.43/PAL60	NTSC/PAL/SECAM/PAL-M/PAL-N/NTSC4.43/PAL60	NTSC/PAL/SECAM/PAL-M/PAL-N/NTSC4.43/PAL60	NTSC/PAL/SECAM/PAL-M/PAL-N/NTSC4.43/PAL60	NTSC/PAL/SECAM/PAL-M/PAL-N/NTSC4.43	NTSC/PAL/SECAM/PAL-M/PAL-N/NTSC4.43	NTSC/PAL/SECAM/PAL-M/PAL-N/NTSC4.43	
Component Video	SDTV: 480i, 480p, 576i, 576p HDTV: 720p(480/60Hz), 1080i(480/60Hz), 1080p(480/60Hz)	SDTV: 480i, 480p, 576i, 576p HDTV: 720p(480/60Hz), 1080i(480/60Hz), 1080p(480/60Hz)	SDTV: 480i, 480p, 576i, 576p HDTV: 720p(480/60Hz), 1080i(480/60Hz), 1080p(480/60Hz)	SDTV: 480i, 480p, 576i, 576p HDTV: 720p(480/60Hz), 1080i(480/60Hz), 1080p(480/60Hz)	SDTV: 480i, 480p, 576i, 576p HDTV: 720p(480/60Hz), 1080i(480/60Hz), 1080p(480/60Hz)	SDTV: 480i, 480p, 576i, 576p HDTV: 720p(480/60Hz), 1080i(480/60Hz), 1080p(480/60Hz)	SDTV: 480i, 480p, 576i, 576p HDTV: 720p(480/60Hz), 1080i(480/60Hz), 1080p(480/60Hz)	SDTV: 480i, 480p, 576i, 576p HDTV: 720p(480/60Hz), 1080i(480/60Hz), 1080p(480/60Hz)
HDMI Video	Signal: 525i(480i), 525p(480p), 625i(576i), 1125i(1080i/480/60), 750p(720p/480/60), 1125p(1080p/480/60)	Signal: 525i(480i), 525p(480p), 625i(576i), 1125i(1080i/480/60), 750p(720p/480/60), 1125p(1080p/480/60)	Signal: 525i(480i), 525p(480p), 625i(576i), 1125i(1080i/480/60), 750p(720p/480/60), 1125p(1080p/480/60)	Signal: 525i(480i), 525p(480p), 625i(576i), 1125i(1080i/480/60), 750p(720p/480/60), 1125p(1080p/480/60)	-	-	-	-
Plug & Play	DDC2B	DDC2B	DDC2B	DDC2B	DDC2B	DDC2B	DDC2B	
FEATURES								
Speaker	16W Mono	16W Mono	16W Mono	16W Mono	-	1W Mono	1W Mono	
Basic functions	Freeze, Magnifying, Blank, Auto adjustment, Search, Page UP&DOWN (for USB mouse function)	Freeze, Magnifying, Blank, Auto adjustment, Search, Page UP&DOWN (for USB mouse function)	Freeze, Magnifying, Blank, Auto adjustment, Search, Page UP&DOWN (for USB mouse function)	Freeze, Magnifying, Blank, Auto adjustment, Search, Page UP&DOWN (for USB mouse function)	Freeze, Magnifying, Blank, Auto adjustment, Search, Page UP & DOWN (for USB mouse function)	Freeze, Magnifying, Blank, Auto adjustment, Search, Page UP & DOWN (for USB mouse function)	Freeze, Magnifying, Blank, Auto adjustment, Search, Page UP & DOWN (for USB mouse function)	
Picture adjustments	Equalizing Gamma Correction, 2-3 pull down, Progressive Scan, Noise Reduction	Equalizing Gamma Correction, 2-3 pull down, Progressive Scan, Noise Reduction	Equalizing Gamma Correction, 2-3 pull down, Progressive Scan, Noise Reduction	Equalizing Gamma Correction, 2-3 pull down, Progressive Scan, Noise Reduction	Equalizing Gamma Correction, 2-3 pull down, Progressive Scan, Noise Reduction	Equalizing Gamma Correction, 2-3 pull down, Progressive Scan, Noise Reduction	Equalizing Gamma Correction, 2-3 pull down, Progressive Scan, Noise Reduction	
Digital keystone	Auto V keystone ± 30 degrees(@XGA 60Hz)	Auto V keystone ± 30 degrees(@XGA 60Hz)	Auto V keystone ± 30 degrees(@XGA 60Hz)	Auto V keystone ± 30 degrees(@XGA 60Hz)	Manual V keystone ± 30 degrees(@XGA 60Hz)	Auto V keystone ± 30 degrees (@XGA 60Hz)	Auto V keystone ± 30 degrees (@XGA 60Hz)	
Advanced features	MyScreen, My Memory, Blank/My Button, My Text, My Source, blackboard/whiteboard mode, Daytime Mode, Input Source Naming (English), resolution setting, Template, Closed Caption (for NTSC & component 480i only), Audio pass through	MyScreen, My Memory, Blank/My Button, My Text, My Source, blackboard/whiteboard mode, Daytime Mode, Input Source Naming (English), resolution setting, Template, Closed Caption (for NTSC & component 480i only), Audio pass through	MyScreen, My Memory, Blank/My Button, My Text, My Source, blackboard/whiteboard mode, Daytime Mode, Input Source Naming (English), resolution setting, Template, Closed Caption (for NTSC & component 480i only), Audio pass through	MyScreen, My Memory, Blank/My Button, My Text, My Source, blackboard/whiteboard mode, Daytime Mode, Input Source Naming (English), resolution setting, Template, Closed Caption (for NTSC & component 480i only), Audio pass through	MyScreen, My Memory, Blank/My Button, My Text, My Source, blackboard/whiteboard mode, Daytime Mode, Input Source Naming (English), resolution setting, Template, Closed Caption (for NTSC & component 480i only), Audio pass through	MyScreen, My Memory, Blank/My Button, My Text, My Source, blackboard/whiteboard mode, Daytime Mode, Input Source Naming (English), resolution setting, Template, Closed Caption (for NTSC & component 480i only), Audio pass through	MyScreen, My Memory, Blank/My Button, My Text, My Source, blackboard/whiteboard mode, Daytime Mode, Input Source Naming (English), resolution setting, Template, Closed Caption (for NTSC & component 480i only), Audio pass through	MyScreen, My Memory, Blank/My Button, My Text, My Source, blackboard/whiteboard mode, Daytime Mode, Input Source Naming (English), resolution setting, Template, Closed Caption (for NTSC & component 480i only), Audio pass through
Outward	Easy lamp replace from top, Air filter slides towards front side or top	Easy lamp replace from top, Air filter slides towards front side or top	Easy lamp replace from top, Air filter slides towards front side or top	Easy lamp replace from top, Air filter slides towards front side or top	Easy lamp replace from top, Air filter on side	Easy lamp replace from top, Air filter on side	Easy lamp replace from top, Air filter on side	
Power on & off	Quick On, Direct On, Auto Off	Quick On, Direct On, Auto Off	Quick On, Direct On, Auto Off	Quick On, Direct On, Auto Off	Quick On, Direct On, Auto Off	Quick On, Direct On, Auto Off	Quick On, Direct On, Auto Off	
Security systems	Security bar, PIN-Lock, MyScreen Password, Keypad-Lock, Kensington slot, Transition detector, My Text Lock, Security label	Security bar, PIN-Lock, MyScreen Password, Keypad-Lock, Kensington slot, Transition detector, My Text Lock, Security label	Security bar, PIN-Lock, MyScreen Password, Keypad-Lock, Kensington slot, Transition detector, My Text Lock, Security label	Security bar, PIN-Lock, MyScreen Password, Keypad-Lock, Kensington slot, Transition detector, My Text Lock, Security label	Security bar, PIN-Lock, MyScreen Password, Keypad-Lock, Kensington slot, My Text	Security bar, PIN-Lock, MyScreen Password, Keypad-Lock, Kensington slot, Transition detector, My Text, Security label	Security bar, PIN-Lock, MyScreen Password, Keypad-Lock, Kensington slot, Transition detector, My Text, Security label	
Network	Configure and control projector via web browser, receive alerts via e-mail, projector management via SNMP, Scheduling, My Image, displaying text data transferred via the network, Command Control via network, AMX Device Discovery, PJ Link™, Network Bridge	Configure and control projector via web browser, receive alerts via e-mail, projector management via SNMP, Scheduling, My Image, displaying text data transferred via the network, Command Control via network, AMX Device Discovery, PJ Link™, Network Bridge	Configure and control projector via web browser, receive alerts via e-mail, projector management via SNMP, Scheduling, My Image, displaying text data transferred via the network, Command Control via network, AMX Device Discovery, PJ Link™, Network Bridge	Configure and control projector via web browser, receive alerts via e-mail, projector management via SNMP, Scheduling, My Image, displaying text data transferred via the network, Command Control via network, AMX Device Discovery, PJ Link™, Network Bridge	-	-	-	
CONNECTIONS								
Digital input	1 x HDMI	1 x HDMI	1 x HDMI	1 x HDMI	-	-	-	
Computer input	2 x 15-pin Mini D-sub	2 x 15-pin Mini D-sub	2 x 15-pin Mini D-sub	2 x 15-pin Mini D-sub	1 x 15-pin Mini D-sub	2 x 15-pin Mini D-sub	2 x 15-pin Mini D-sub	
Computer output	1 x 15-pin Mini D-sub	1 x 15-pin Mini D-sub	1 x 15-pin Mini D-sub	1 x 15-pin Mini D-sub	-	1 x 15-pin Mini D-sub	1 x 15-pin Mini D-sub	
Video input	1 x RCA for component 2 x Component D-sub (shared with analogue RGB) 1 x RCA for composite 1 x Mini-DIN for S-Video	1 x RCA for component 2 x Component D-sub (shared with analogue RGB) 1 x RCA for composite 1 x Mini-DIN for S-Video	1 x RCA for component 2 x Component D-sub (shared with analogue RGB) 1 x RCA for composite 1 x Mini-DIN for S-Video	1 x RCA for component 2 x Component D-sub (shared with analogue RGB) 1 x RCA for composite 1 x Mini-DIN for S-Video	1 x Component D-sub (shared with analogue RGB) 1 x RCA for composite	2 x Component D-sub (shared with analogue RGB) 1 x RCA for composite 1 x Mini-DIN for S-Video	2 x Component D-sub (shared with analogue RGB) 1 x RCA for composite 1 x Mini-DIN for S-Video	2 x Component D-sub (shared with analogue RGB) 1 x RCA for composite 1 x Mini-DIN for S-Video
Audio input	2 x Stereo Mini Jack 1 x pair RCA (L/R) 1 x Microphone Jack (Stereo Mini)	2 x Stereo Mini Jack 1 x pair RCA (L/R) 1 x Microphone Jack (Stereo Mini)	2 x Stereo Mini Jack 1 x pair RCA (L/R) 1 x Microphone Jack (Stereo Mini)	2 x Stereo Mini Jack 1 x pair RCA (L/R) 1 x Microphone Jack (Stereo Mini)	-	2 x Stereo Mini Jack	2 x Stereo Mini Jack	
Audio output	1 x pair RCA (L/R)	1 x pair RCA (L/R)	1 x pair RCA (L/R)	1 x pair RCA (L/R)	-	1 x Stereo Mini Jack	1 x Stereo Mini Jack	
Control	1 x 9-pin D-sub for RS-232C control	1 x 9-pin D-sub for RS-232C control	1 x 9-pin D-sub for RS-232C control	1 x 9-pin D-sub for RS-232C control	-	1 x 9-pin D-sub for RS-232C control	1 x 9-pin D-sub for RS-232C control	
USB Type A/Type B	Yes (PC less presentation)/Yes (USB mouse)	Yes (PC less presentation)/Yes (USB mouse)	Yes (PC less presentation)/Yes (USB mouse)	Yes (PC less presentation)/Yes (USB mouse)	-	No/Yes (USB mouse)	No/Yes (USB mouse)	
Network	1 x RJ-45	1 x RJ-45	1 x RJ-45	1 x RJ-45	-	-	-	
POWER								
Power supply	100-120V/220-240V, auto switching	100-120V/220-240V, auto switching	100-120V/220-240V, auto switching	100-120V/220-240V, auto switching	100-120V/220-240V, auto switching	100-120V/220-240V, auto switching	100-120V/220-240V, auto switching	
Power Consumption/Standby	310W/<1W	310W/<1W	310W/<1W	310W/<1W	TBD/<0.5W	270W/<0.5W	TBD/<0.5W	
PHYSICAL								
Dimensions (W x H x D)	317 x 98 x 288mm (excluding feet and extrusions)	317 x 98 x 288mm (excluding feet and extrusions)	317 x 98 x 288mm (excluding feet and extrusions)	317 x 98 x 288mm (excluding feet and extrusions)	306 x 221 x 77mm (excluding feet and extrusions)	306 x 221 x 77mm (excluding feet and extrusions)	306 x 221 x 77mm (excluding feet and extrusions)	
Weight	3.5Kg	3.5Kg	3.6Kg	3.5Kg	2.1Kg	2.2Kg	2.2Kg	
Noise level	36dB (Normal Mode)/29dB (Eco Mode)	36dB (Normal Mode)/29dB (Eco Mode)	36dB (Normal Mode)/29dB (Eco Mode)	36dB (Normal Mode)/29dB (Eco Mode)	35dB (Normal Mode)/28dB (Eco Mode)	35dB (Normal Mode)/28dB (Eco Mode)	35dB (Normal Mode)/28dB (Eco Mode)	
Air filter	Hybrid	Hybrid	Hybrid	Hybrid	Urethane	Hybrid	Hybrid	
MISCELLANEOUS								
Indicator lights (lamp, temp, power), Ceiling mount image, Rear projection image, Serial number label on side	Indicator lights (lamp, temp, power), Ceiling mount image, Rear projection image, Serial number label on side	Indicator lights (lamp, temp, power), Ceiling mount image, Rear projection image, Serial number label on side	Indicator lights (lamp, temp, power), Ceiling mount image, Rear projection image, Serial number label on side	Indicator lights (lamp, temp, power), Ceiling mount image, Rear projection image, Serial number label on side	Indicator lights (lamp, temp, power), Ceiling mount image, Rear projection image, Serial number label on side	Indicator lights (lamp, temp, power), Ceiling mount image, Rear projection image, Serial number label on side	Indicator lights (lamp, temp, power), Ceiling mount image, Rear projection image, Serial number label on side	
ACCESSORIES SUPPLIED								
Remote controls	Remote control with batteries, Computer cable, Power cord, Lens cap, Security label, User manual (detail & concise), Application software for LAN display HL02483	Remote control with batteries, Computer cable, Power cord, Lens cap, Security label, User manual (detail & concise), Application software for LAN display HL02483	Remote control with batteries, Computer cable, Power cord, Lens cap, Security label, User manual (detail & concise), Application software for LAN display HL02483	Remote control with batteries, Computer cable, Power cord, Lens cap, Security label, User manual (detail & concise), Application software for LAN display HL02483	Remote control with batteries, Computer cable, Power cord, User manual (detail & concise)	Remote control with batteries, Computer cable, Power cord, Lens cap, Security label, User manual (detail & concise)	Remote control with batteries, Computer cable, Power cord, Lens cap, Security label, User manual (detail & concise)	
OPTIONAL ACCESSORIES								
Replacement lamp/Lamp Wattage	DT01021/210W UHB	DT01021/210W UHB	DT01021/210W UHB	DT01021/210W UHB	DT01151/200W UHB	DT01141/200W UHB	DT01141/200W UHB	
WARRANTY								
Projector warranty/Lamp warranty	3 Years/6 Months**	3 Years/6 Months**	3 Years/6 Months**	3 Years/6 Months**	3 Years/6 Months**	3 Years/6 Months**	3 Years/6 Months**	

*The stated lamp life refers to the average life expected in ideal operating conditions with usage in accordance with the manual. The majority of, but not all lamps should achieve this figure. **Where a lamp falls within warranty and a replacement lamp is taken, the warranty for the replacement lamp will be a maximum of 6 months (dependent on warranty hours stated). The "HD ready" Logo is a trademark of EICTA. HDMI, the HDMI logo and High-Definition Multimedia Interface are trademarks or registered trademarks of HDMI Licensing LLC. The specification above and photography is for reference only and may be subject to change.

Connectivity

You can connect the Multi Purpose range of projectors to a variety of devices, to support all your projection needs. From DVD players, monitors and PCs, to the Local Area Network and a simple mouse connection, Hitachi has done everything possible to create the most flexible user experience.



HITACHI DIGITAL MEDIA
Hitachi Europe Ltd, Whitebrook Park, Lower Cookham Road,
Maidenhead, Berkshire SL6 8YA UNITED KINGDOM
Tel: +44 (0)1628 585 000 Fax: +44 (0)1628 585 500
www.hitachidigitalmedia.com



MULTI PURPOSE LCD PROJECTORS

- ▶ CP-X4011N ▶ CP-X3020
- ▶ CP-X3011N ▶ CP-WX3011N
- ▶ CP-X2520 ▶ CP-X2511N
- ▶ CP-RX79



INNOVATE
The Future of Projection

HITACHI
Inspire the Next

Cutting-edge projection for all

At the heart of the Hitachi philosophy is innovation. Our new Multi Purpose projector range brings together the finest features for business and education. Whichever model you choose, you'll find top-of-the range picture quality, security and networking, in a user-friendly package. Hitachi is dedicated to lowering costs and protecting the environment, so the range also features longer-life parts and energy-saving settings.

Outstanding picture quality

Exceptional contrast

Hitachi's networkable models feature a 2000:1 contrast ratio which you'd expect from high-end projectors. In addition these models also benefit from our Active Iris technology. This automatically ensures optimal image contrast and depth perspective during both bright and dark scenes – for the brightest whites, blackest blacks and boldest colours.



Bright scene



Dark scene

Blackboard and Whiteboard Modes

Projecting onto coloured backgrounds can make images appear dull – whilst shiny backgrounds can make them uncomfortably bright. With our Blackboard and Whiteboard modes, you can ensure optimal brightness whether the screen is black, green or shiny white.



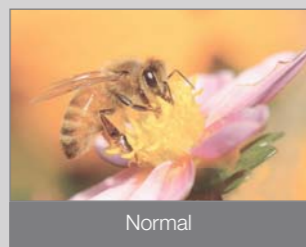
Normal



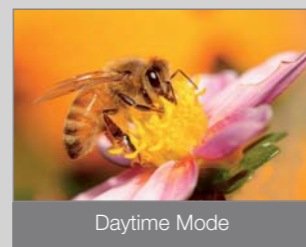
Whiteboard Mode

Daytime Mode

It can be harder to see a projected picture when the sun is shining brightly. Using Daytime Mode, projections are always vivid and colourful in a bright environment.



Normal



Daytime Mode

Virtually maintenance-free



Hitachi projectors are stylish, practical and cutting-edge – but we also work hard to ensure they are as green as possible at every stage of their lifecycle. That's why the 1W Standby Mode is an important new feature on all Hitachi projectors.

A new European Directive may soon limit the power consumption of projectors in standby to 1W or less. But at Hitachi, we're one step ahead. As part of our Environmental Vision, we've already ensured that all the projectors have this power-saving feature. So from 2010, you'll save energy even if you need to leave your projector in Standby Mode.

This is one of many steps Hitachi is taking to help minimise our impact on the environment.

Hitachi's projectors use components which help in the overall reduction of their carbon footprint.



Super Hybrid Filter

The new Hitachi Super Hybrid Filter is the best you'll find on the market. It lasts an exceptional 6000 hours – to make maintenance less frequent and reduce replacement costs.



Long lamp life

Now you can benefit from longer lamp life than ever before. Using the new Eco Mode, lamp life is extended to more than 6000 hours* – equivalent to the projector being used for three hours a day over a period of ten years.



Long filter life

A Hitachi filter should last as long as the projector lamp. And because replacement lamps come with a new filter, you can simply replace both at the same time, making it unnecessary to clean the filter.

Usability

Template function

This unique Hitachi feature allows you to project lines, grids and maps onto a whiteboard, blackboard or flip chart, to make writing and drawing easier.



Audio Pass Through

Audio Pass through allows the user to listen to external speakers via the projectors audio output whilst in standby mode, so you experience audio without images. This feature preserves the lamp life when you only need sound.



My Button

This customisable feature allows the user to assign a designated or frequently used function from the menu to this button.

In addition the green button on the top of CP-X2520 and CP-X3020 clears the screen instantly.



Multi PC Mode

The Multi PC Mode is perfect for use in meetings and the classroom as it allows up to four people to project their PC screens at the same time via a network. (Network models only)



New OSD (On Screen Display) Menu and Input Source Naming

The new intuitive icons featured in the On Screen Display clearly identify the different functions and settings enabling easy navigation and installation. In addition, input Sources can be personalised so that they are easier to understand and identify – for instance, 'S-Video' can become 'DVD player'.

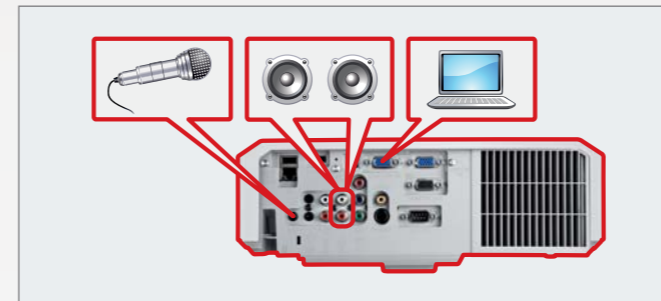


On Screen Display Menu

Input Source Naming

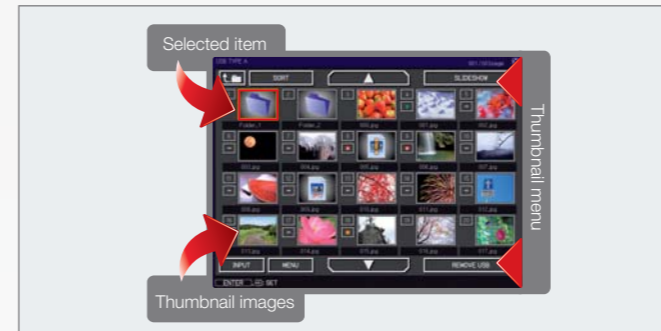
Microphone input and amplifier

The two 8 watt speakers and microphone system found on the CP-X2511N, CP-X3011N, CP-WX3011N and the CP-X4011N provide the user with a convenient audio solution.



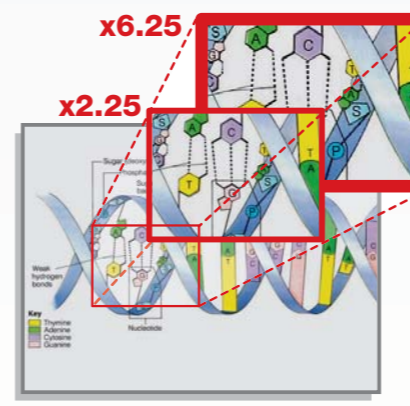
PC-Less Presentation

Start your presentations smoothly and quickly with Hitachi's PC-Less presentation mode. Simply insert a USB storage device and present, without the need for a PC. You can also select which slide or image to display from a list of thumbnails.



Zoom function

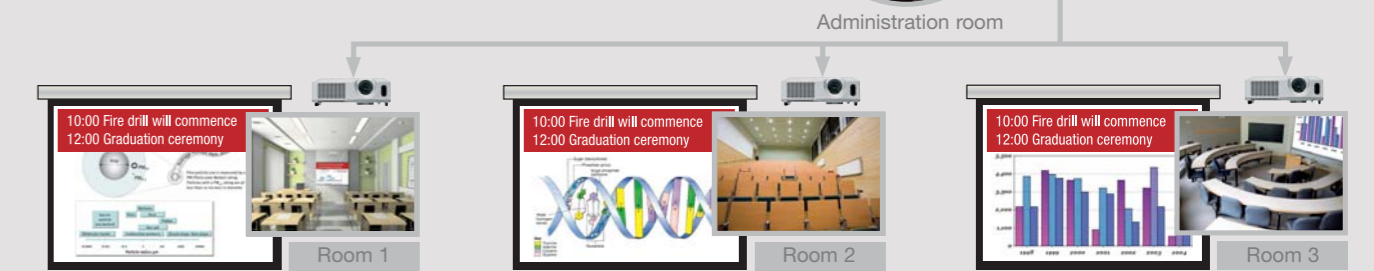
The new zoom function allows the user to select which area of their image they wish to enlarge. Great for teachers who wish to explain a particular part of a diagram in detail. (Applicable to CP-FX79, CP-X2520, CP-X3020)



Advanced network functions (CP-X2511N, CP-X3011N, CP-WX3011N and CP-X4011N)

Messenger function

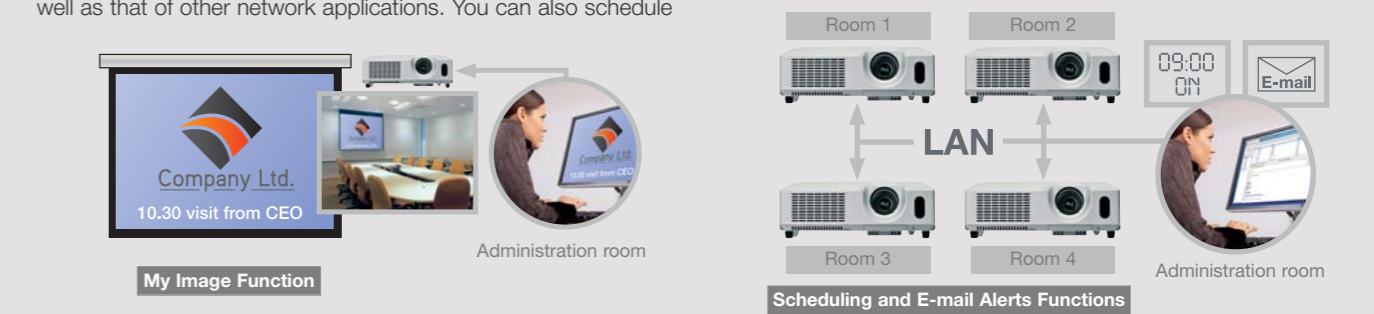
This clever function lets you send text to multiple, networked projectors instantly or at a specified time. This is ideal for projecting daily work schedules, university campus notifications, school activities or any information that needs to go out over a large area – fast.



Convenient networking functions

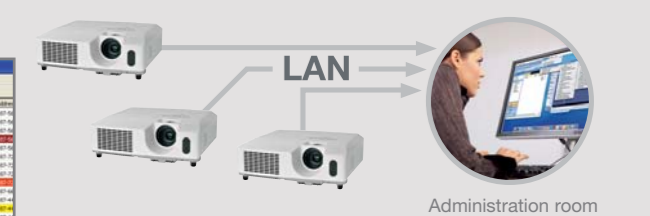
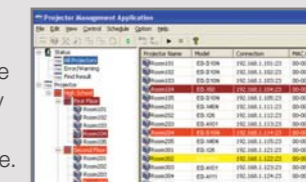
Now you can manage and control multiple projectors over your LAN. The projector can monitor and diagnose its own status, as well as that of other network applications. You can also schedule

the projector to turn on and off automatically. And all of this functionality can be easily accessed via a web browser.



Centralised reporting functions

Using a single PC, you can create detailed reports for all your networked projectors. This can make maintenance simpler – for example, by revealing any projector that isn't working or any projectors that are due for maintenance.

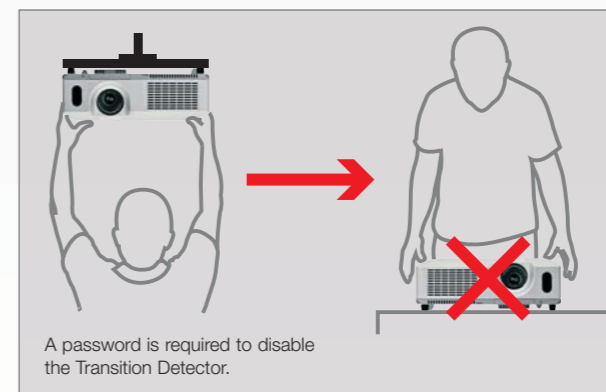


Security

Transition Detector

Hitachi's range of Multi Purpose projectors are equipped with comprehensive security features to help protect your projector at all times.

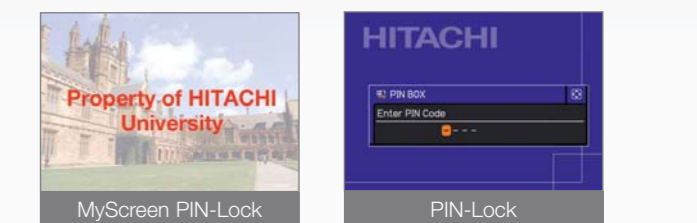
If the projector is removed from its installed location, it triggers Hitachi's unique Transition Detector. This renders the projector inoperative unless a password is entered.



A password is required to disable the Transition Detector.

PIN-Lock

The PIN-Lock ensures only authorised people can use the projector by entering their unique PIN code. This screen can be branded to your company or educational establishment using the MyScreen function.



Security bar

Projectors are equipped with a security bar allowing a chain to be attached for physical security.

